

DATA SHEET SYSTEM HEATING PIPES



www.schuetz.net

System heating pipe 14 x 2 mm tri-o-flex®

Metal composite safety heating pipe
impervious to oxygen diffusion



Monitoring:

1. In-house monitoring
2. Süddeutsches Kunststoffzentrum SKZ
Würzburg (SKZ certification A304)

Configuration:

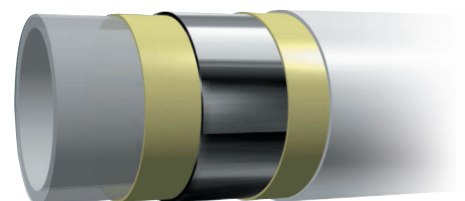
- Inner pipe made of polyethylene (PE-RT)
- Adhesion promoter
- Aluminium layer
- Adhesion promoter
- Outer pipe made of polyethylene (PE-RT)

Accessories:

Safety pipe
Article no. 1163000

TECHNICAL DATA

Max. operating temperature	95 °C
Max. operating pressure	6 bar
Bending radius with/without bending help	3 x d / 5 x d
Coefficient of thermal expansion	$2.3 \times 10^{-4} \text{ K}^{-1}$
Colour	white
Thermal conductivity	0.43 W/mK
Water content	0.079 l/m



DATA SHEET SYSTEM HEATING PIPES



www.schuetz.net

Maximum permissible operating temperature and maximum permissible operating pressure influence each other. The possible operating temperatures for the respective operating pressure can be calculated using the creep rupture structures overleaf.

Roll dimensions:

Dimension	Length in m	Di in mm	Da in mm	Width in mm	Weight in kg	PU/pallet	Article no.
14 x 2.0	200	500	780	150	17.5	2400 m 12 rolls	3002687
14 x 2.0	500	450	780	310	43.7	2500 m 5 rolls	3039264

DATA SHEET SYSTEM HEATING PIPES



www.schuetz.net

System heating pipe 16 x 2 mm tri-o-flex®

Metal safety heating pipe
impervious to oxygen diffusion



Monitoring:

1. In-house monitoring
2. Süddeutsches Kunststoffzentrum SKZ
Würzburg (SKZ certification A304)

Configuration:

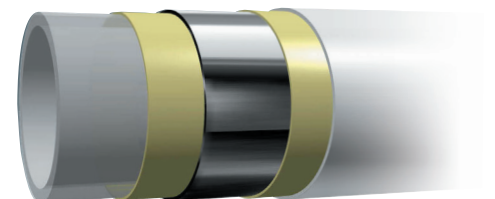
- Inner pipe made of polyethylene (PE-RT)
- Adhesion promoter
- Aluminium layer
- Adhesion promoter
- Outer pipe made of polyethylene (PE-RT)

Accessories:

Safety pipe
Article no. 1163000

TECHNICAL DATA

Max. operating temperature	95 °C
Max. operating pressure	6 bar
Bending radius with/without bending help	3 x d / 5 x d
Coefficient of thermal expansion	$2.3 \times 10^{-5} \text{ K}^{-1}$
Colour	white
Thermal conductivity	0.43 W/mK
Water content	0.113 l/m



DATA SHEET SYSTEM HEATING PIPES



www.schuetz.net

Maximum permissible operating temperature and maximum permissible operating pressure influence each other. The possible operating temperatures for the respective operating pressure can be calculated using the creep rupture structures overleaf.

Roll dimensions:

Dimension	Length in m	Di in mm	Da in mm	Width in mm	Weight in kg	PU/pallet	Article no.
16 x 2.0	200	450	780	150	20.5	2400 m 12 rolls	3002688
16 x 2.0	500	450	780	500	51.0	1500 m 3 rolls	3008496